



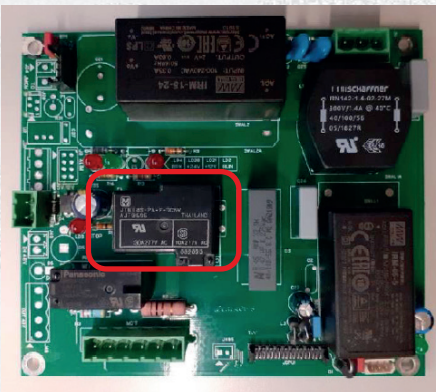
SUBJECT: Change of motor relay on PEAL 401 power supply board code 5-108561(B)

Dear Sirs,

In the ongoing process of product improvement, we inform you that, as of May 2023, we have made a change to the PEAL 401 power supply board, spare part code 5-108561(B), present in the Teco 680, Teco 680 plus, Teco 680 plus Touchscreen (with manual or automatic clamping) wheel balancer models.

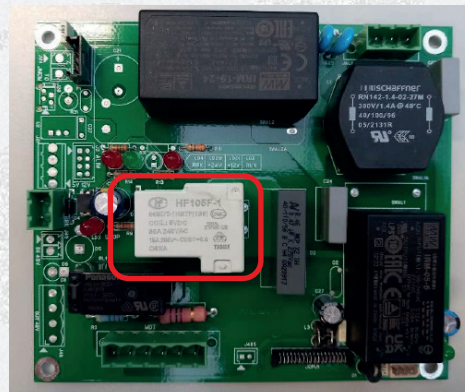
The change consists in the replacement of the electromechanical **RL2** relay with one of a different brand, model and colour, so as to avoid reported cases of failure to start the spin motor, resulting in the display of error message E30.

OLD VERSION 5-108561(A)



PANASONIC

NEW VERSION 5-108561(B)



HONGFA

Thank you for your kind attention. We remain at your full disposal for any further explanation.